

# POLYGON

## OWNER MANUAL





*COLLOSUS<sup>T</sup>*



CLLOSUS T9 D12 CB



*COLLOSUS<sup>T</sup>*



COLLOSUS T8 CB



**COLLOSUS<sup>T</sup>**



COLLOSUS T6 CB



# CONGRATULATIONS!

Congratulations for buying Polygon Bikes! A bicycle is a great tool for transportation and recreation. Hopefully, you can find enjoyment and have a great deal of use in every ride. This manual contains important information which includes safety, performance, and maintenance.

**IMPORTANT**

Read this manual before taking your first ride and use it for future reference as well.

Additional safety, performance, and service information related to specific components such as suspension, pedals, and other accessories, such as helmets or lights you have purchased. Make sure your nearest authorized dealer has given all the manufacturing literature which includes in your bicycle and accessories. In case of conflict between the instructions and information provided in this manual, always follow the component manufacturer's instructions.

If you have any questions or do not understand something within this guide, take responsibility for your safety and consult with your nearest authorized dealer or the bicycle's manufacturer.

**NOTE**

This manual is not intended for comprehensive use, service repair, or service manual. Please see your nearest authorized dealer for all service, repairs, and maintenance-related action. Your dealer is also able to refer you to classes, clinics, or books for service or maintenance.

**WARNING**

To ensure the warranty of your bicycle, be sure to only use the original spare parts.

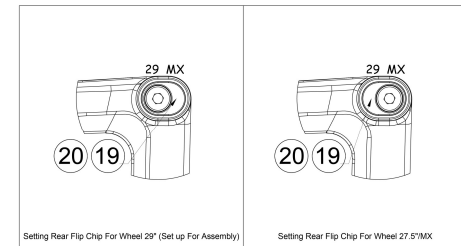
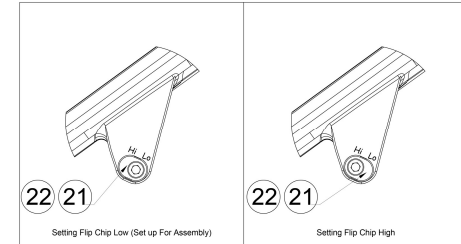
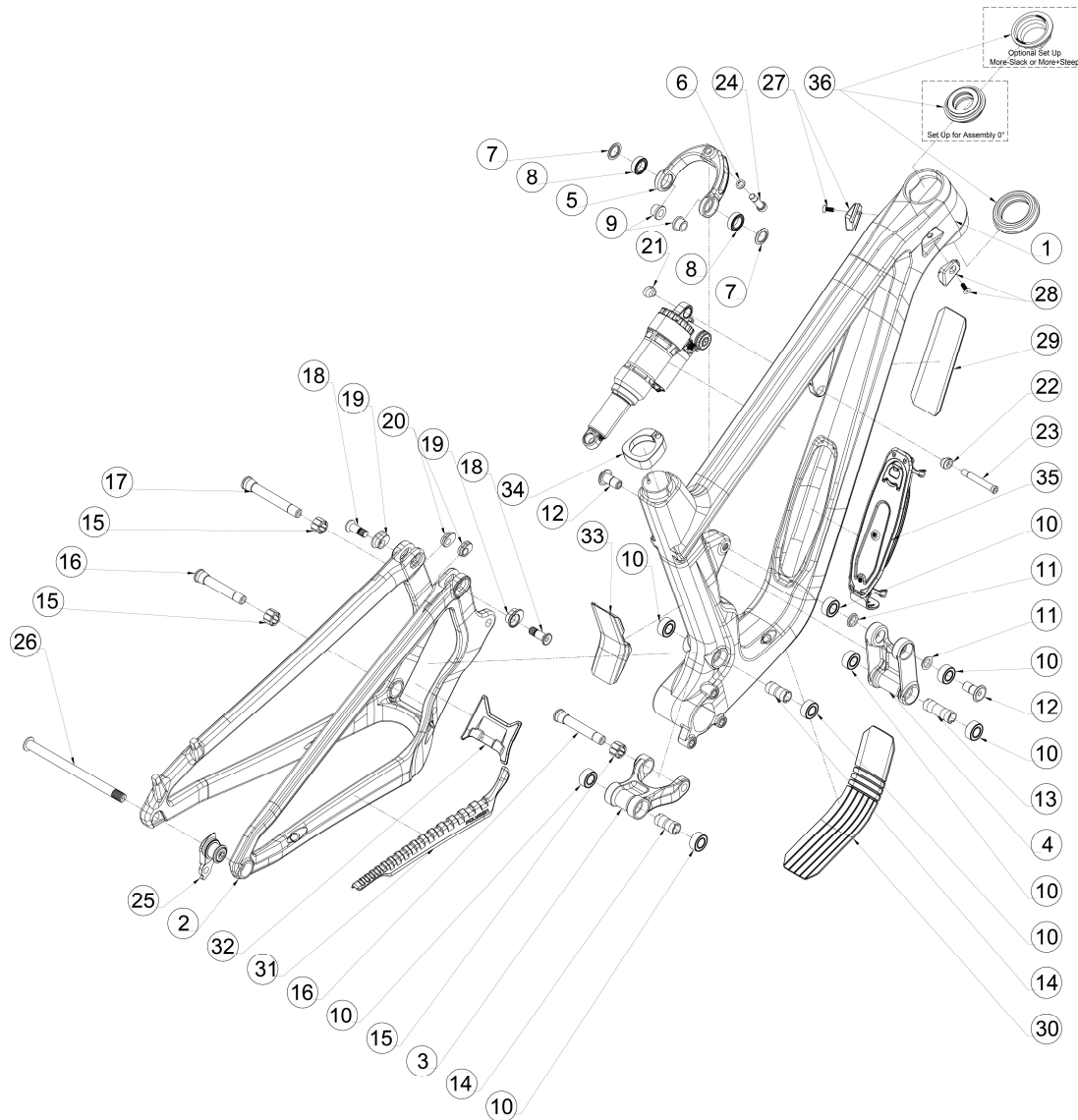
**COLLOSUS T CB**

TABLE OF CONTENT

<b>01</b>	INTRODUCTION
<b>02</b>	TABLE OF CONTENT
<b>03</b>	EXPLODED VIEW
<b>04</b>	FRAME KITS
<b>07</b>	ASSEMBLY INSTRUCTION
<b>11</b>	REGULAR INSPECTION
<b>12</b>	HOW TO CLEAN THE BIKE
<b>13</b>	HOW TO CLEAN THE BIKE'S CHAIN

# COLLOSUS T CB

## EXPLODED VIEW



COLLOSUS T CB  
FRAME KITS

PART	ARTICLE	ITEM	ITEM DETAILS	TORQUE (N.m)	QTY / FRAME	SOLD
3			FIRST LINK FOR COLLOSUS T CB	-	1	
14	741932	FIRST LINK KIT COLLOSUS T CB	PIVOT SPACER ID12, OD14.5, L34mm	-	2	AS A SET
15			EXPANDABLE FLOATING SPACER	-	2	
16			PIVOT SHAF M12x1.25, L83, T11.5, HEX6	20	2	
4			SECOND LINK FOR COLLOSUS T CB	-	1	
11			BEARING SPACER ID12, OD16, L3	-	2	
12	741933	SECOND LINK KIT COLLOSUS T CB	PIVOT BOLT M12X1.25, L26.5, 16.2, HEX5	20	2	AS A SET
13			PIVOT SPACER ID12, OD14.5, L47mm	-	1	
15			EXPANDABLE FLOATING SPACER	-	1	
17			PIVOT SHAFT M12x1.25, L98, T13.5, HEX6	20	1	
5			SHOCK YOKE FOR COLLOSUS T CB	-	1	
7	741934	SHOCK YOKE KIT COLLOSUS T CB	FLIP CHIP WASHER	-	2	AS A SET
8			SEALED BALL BEARING 15X24X7mm	-	2	
9			FLIP CHIP TUBE WASHER	-	2	



COLLOSUS T CB  
FRAME KITS

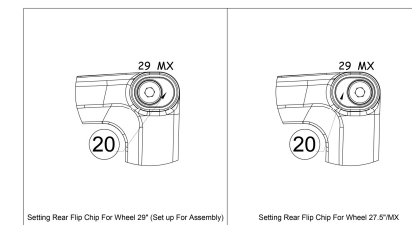
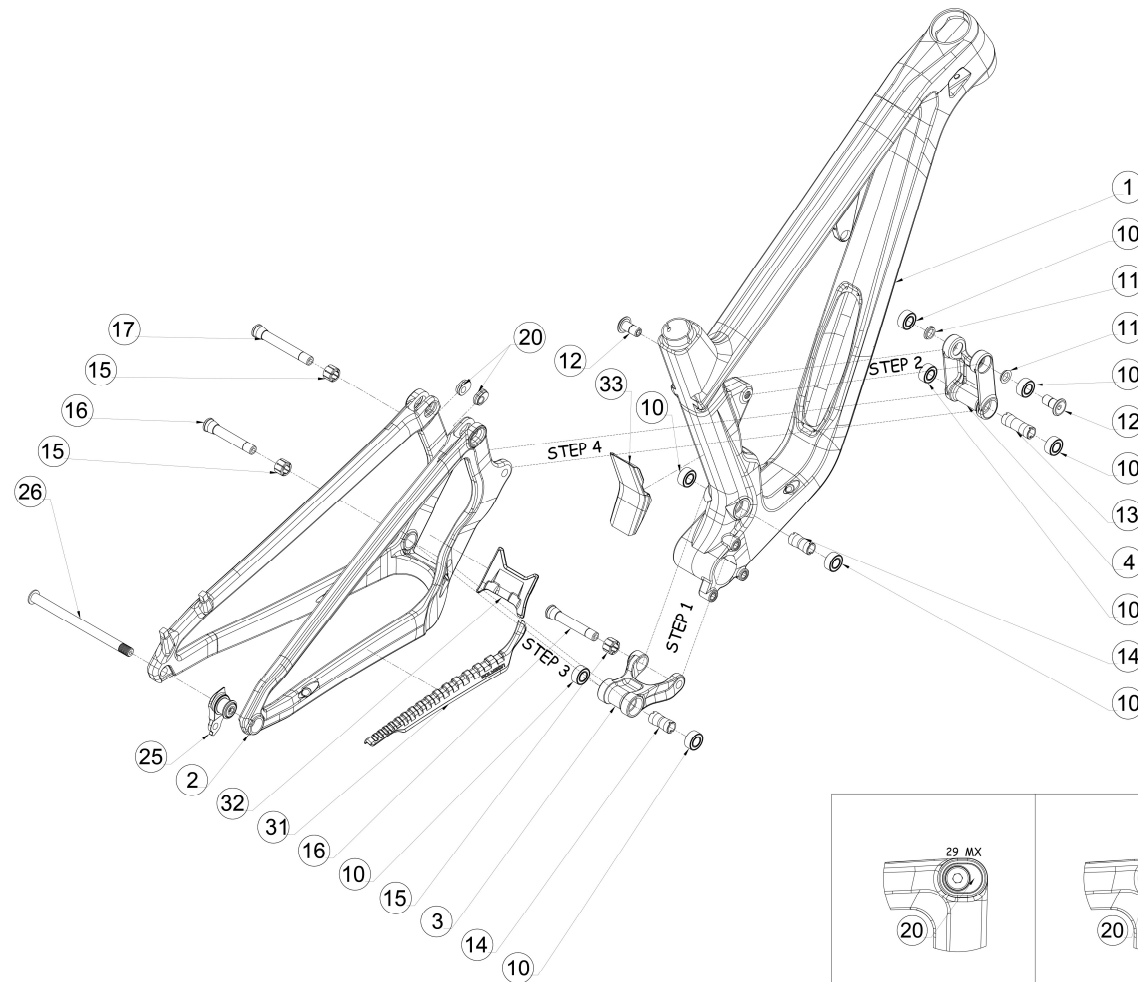
PART	ARTICLE	ITEM	ITEM DETAILS	TORQUE (N.m)	QTY / FRAME	SOLD
6			WASHER ID8.5, OD13.5	-	1	
23	741404	SHOCK BOLT AND NUT SET	BOLT M8x1.25, L60.5, T9, HEX5	10	1	AS A SET
24			BOLT M8x1.25, L35.5, T7.5, HEX6	10	1	
10	741382	RUBBER SEALED BEARING	3901 LLU MAX RUBBER SEALED BEARING	-	8	PER 2 PIECES
18			BOLT M10x1.5, L30, T10.3, HEX6	20	2	
19	741935	SHOCK YOKE FLIP CHIP AND BOLT SET	FLIP CHIP ADAPTER	-	2	AS A SET
20			FLIP CHIP NUT	-	2	
21	741417	SHOCK MOUNT FLIP CHIP	FLIP CHIP NUT	-	1	AS A SET
22			FLIP CHIP ADAPTER	-	1	
25	738268	UDH	UNIVERSAL DERAILLEUR HANGER	25	1	PER PIECE
26	741389	REAR THRU AXLE	M12X1.0, L174, T16.5, HEX5	11	1	PER PIECE

COLLOSUS T CB  
FRAME KITS

PART	ARTICLE	ITEM	ITEM DETAILS	TORQUE (N.m)	QTY / FRAME	SOLD
27			CABLE GUIDE (PLG-44-809)	-	1	
28	741373	CABLE GUIDE AND BOLT SET	CABLE GUIDE (PLG-44-806)	-	1	AS A SET
n/a			BOLT M5x12mm	1-2	2	
29	741418	DOWN TUBE SHUTTLE PAD	DOWN TUBE SHUTTLE PAD	-	1	PER PIECE
30	741419	DOWN TUBE PROTECTOR	DOWN TUBE PROTECTOR	-	1	PER PIECE
31	741420	CS PROTECTOR	CHAIN STAY PROTECTOR	-	1	PER PIECE
32	741421	ST PROTECTOR	SEAT TUBE PROTECTOR	-	1	PER PIECE
33	741422	PIVOT PROTECTOR	PIVOT PROTECTOR	-	1	PER PIECE
34	741369	SEAT CLAMP SET	SEAT CLAMP SET	-	1	AS A SET
35	741423	DOWNTUBE STORAGE	DOWN TUBE STORAGE SET	-	1	AS A SET
n/a	741930	HEADSET	FSA HEADSET NO76 BLACK	-	1	PER PIECE

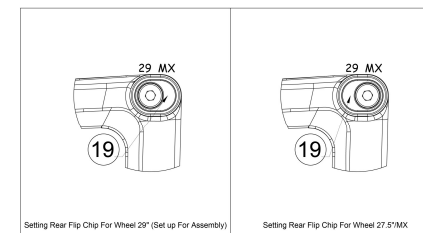
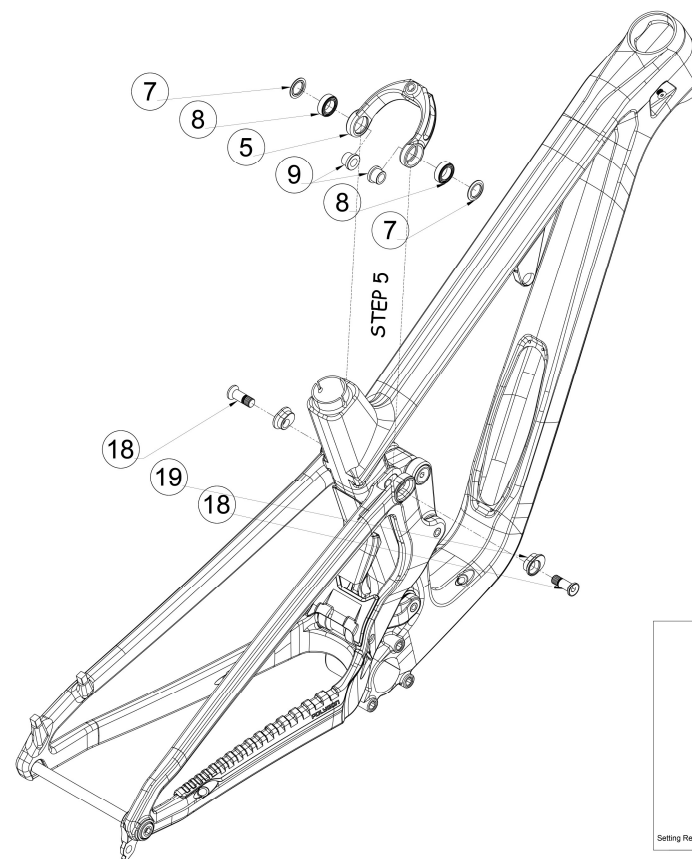
# COLLOSUS T CB

## REAR TRIANGLE ASSEMBLY



# COLLOSUS T CB

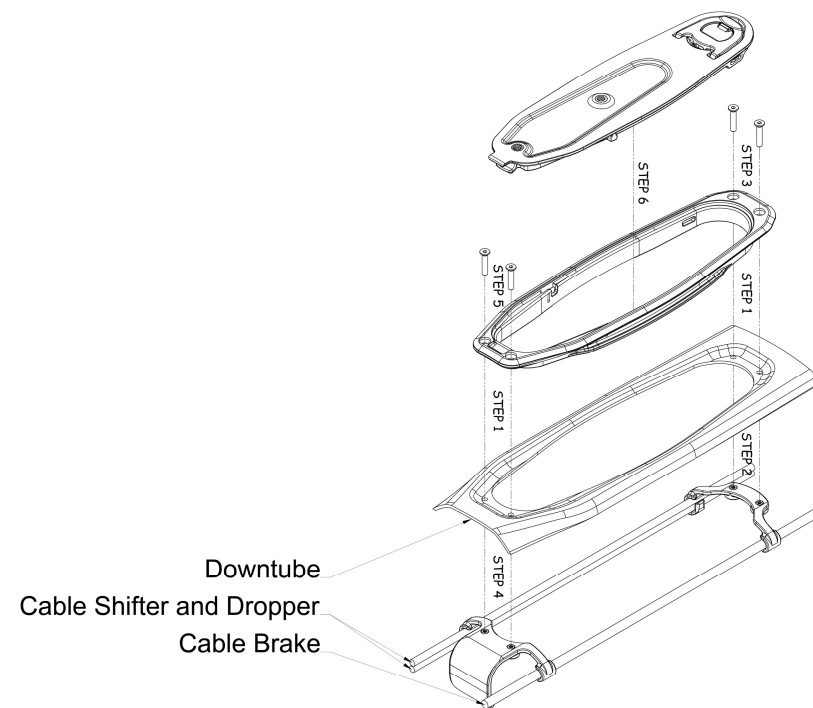
## SHOCK CLEVIS ASSEMBLY







**COLLOSUS T CB**  
POLYPOCKET ASSEMBLY



**COLLOSUS T CB**  
REGULAR INSPECTION**REGURAL INSPECTIONS BEFORE RIDING THE BICYCLE**

Before riding the bicycle, check the following items. If any problems are found, consult your place of purchase or a distributor.

☐

Does the drive train perform gear shifting smoothly?

☐

Are the components securely installed to the frame/ handlebar/ stem, etc.?

☐

Is there sufficient charge remaining in the battery?

☐

Is there any looseness or damage in the component parts?

☐

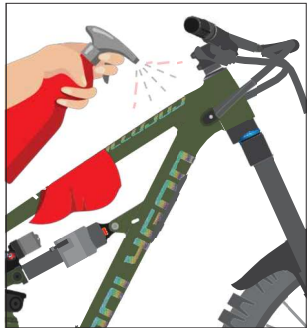
Do any abnormal noises occur while riding?

**AVOID**

Avoid wearing clothing that may get caught in a chain or wheel, as this may cause an accident.

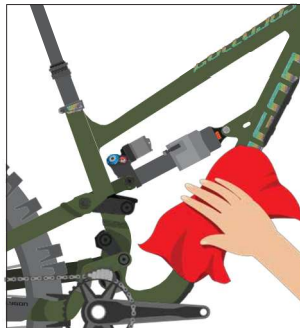
## COLLOSUS T CB

### HOW TO CLEAN THE BIKES



1

Use a bike wash or wet cloth to clean up every part of your bike. Preferably using a specific cleaner for the bike



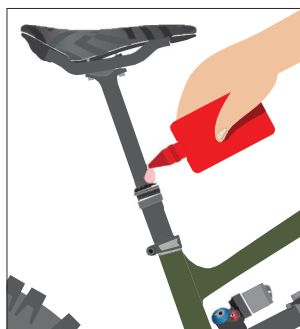
2

Wipe the bike immediately until it's dry. Do not leave it in wet conditions for a long time.



3

Clean up the drivetrain with a clean and dry cloth.



4

Check and lubricate every component if needed, especially 2 or more components that rub against each other, such as the seat post, bottom bracket, hub, pivot frame suspension, ect

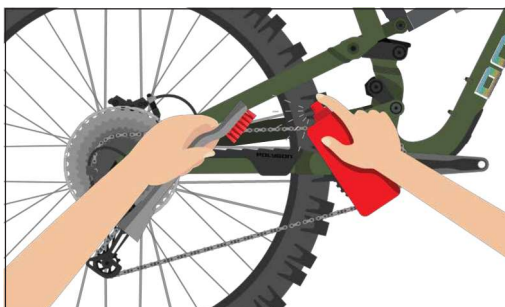
#### NOTE

- Use the right bike wash to make sure your every bike component and frame is safe.
- Avoid washing the bike using high - pressure water
- It is highly recommended to use specific lubricants for bicycle parts, not with engine vehicles or other oil since it might lead to component performance reduction
- It is recommended to use a bike cleaner rather than detergent, solvent like acetone, and thinner to clean the bike parts.



**COLLOSUS T CB**

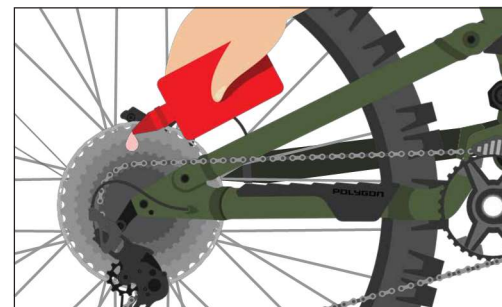
## HOW TO CLEAN THE BIKE'S CHAIN

**1**

Use a bike chain cleaner and gently brush it.

**2**

Wipe with a clean and dry cloth, and let it dry for minutes.

**3**

Lube the chain regularly

# POLYGON

OWNER MANUAL