

# POLYGON

## OWNER MANUAL





**COLLOSUS TLEO**



COLLOSUS TLEO AXS



*COLLOSUS* TL<sup>®</sup>



COLLOSUS TLE8 AXS

# CONGRATULATIONS!

Congratulations for buying Polygon Bikes! A bicycle is a great tool for transportation and recreation. Hopefully, you can find enjoyment and have a great deal of use in every ride. This manual contains important information which includes safety, performance, and maintenance.

**IMPORTANT**

Read this manual before taking your first ride and use it for future reference as well.

Additional safety, performance, and service information related to specific components such as suspension, pedals, and other accessories, such as helmets or lights you have purchased. Make sure your nearest authorized dealer has given all the manufacturing literature which includes in your bicycle and accessories. In case of conflict between the instructions and information provided in this manual, always follow the component manufacturer's instructions.

If you have any questions or do not understand something within this guide, take responsibility for your safety and consult with your nearest authorized dealer or the bicycle's manufacturer.

**NOTE**

This manual is not intended for comprehensive use, service repair, or service manual. Please see your nearest authorized dealer for all service, repairs, and maintenance-related action. Your dealer is also able to refer you to classes, clinics, or books for service or maintenance.

**WARNING**

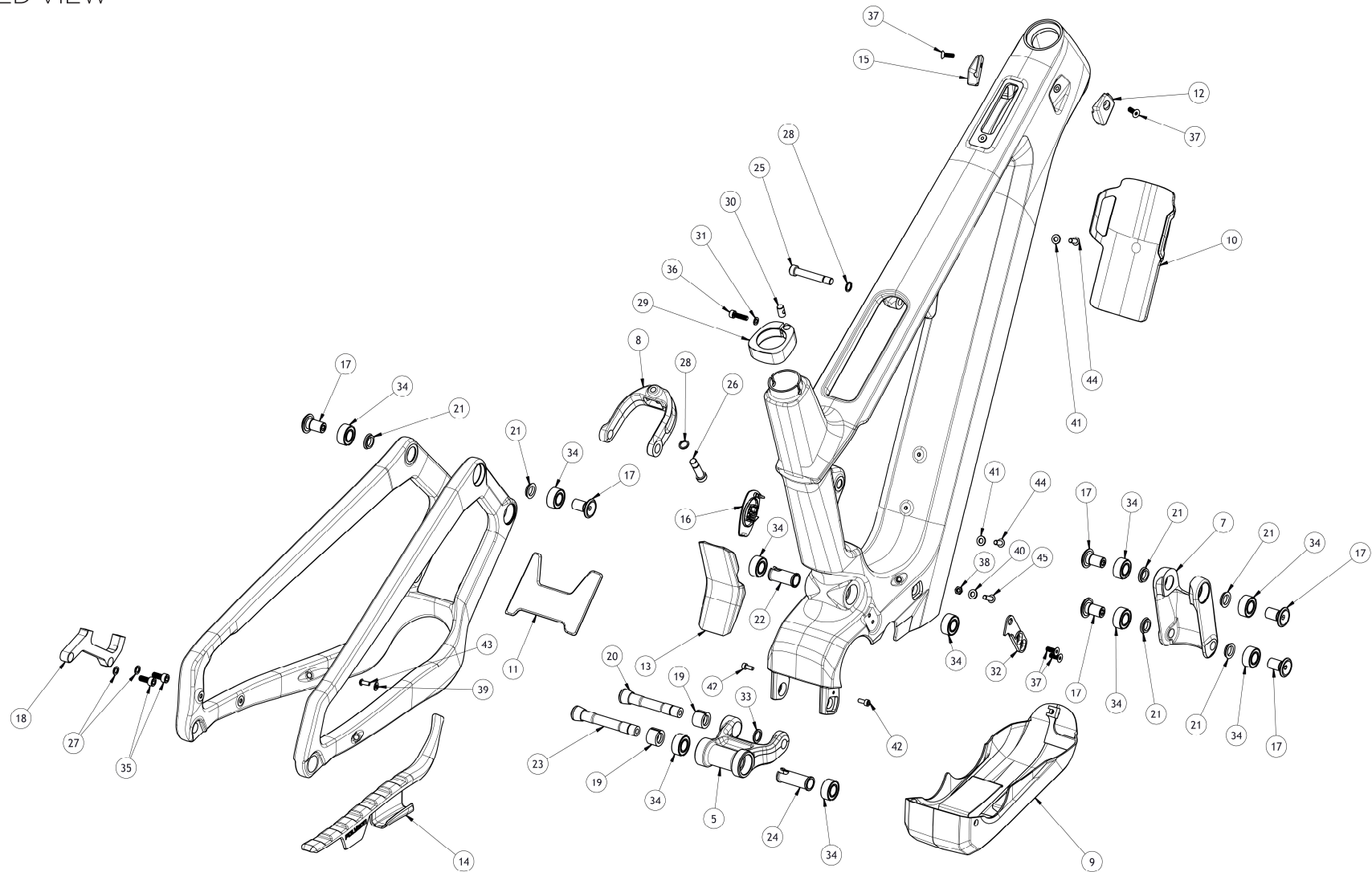
To ensure the warranty of your bicycle, be sure to only use the original spare parts.

**COLLOSUS TLE**  
TABLE OF CONTENT

<b>01</b>	INTRODUCTION
<b>02</b>	TABLE OF CONTENT
<b>03</b>	EXPLODED VIEW
<b>04</b>	FRAME KITS
<b>07</b>	SHOCK PRESSURE RECOMMENDATION
<b>08</b>	ELECTRICAL PART
<b>11</b>	ELECTRICAL PART WIRING
<b>12</b>	REGULAR INSPECTION
<b>13</b>	HOW TO CLEAN THE BIKE
<b>14</b>	HOW TO CLEAN THE BIKE'S CHAIN



COLLOSUS TLE  
EXPLODED VIEW



COLLOSUS TLE  
FRAME KITS

PART	ARTICLE	ITEM	ITEM DETAILS	TORQUE (N.m)	QTY / FRAME	SOLD
5	741390	LOWER LINK	LOWER LINK ASSEMBLY	-	1	PER PIECE
7	741391	UPPER LINK	UPPER LINK ASSEMBLY	-	1	PER PIECE
8	741370	SHOCK YOKE	SHOCK YOKE (PLG-44-501)	-	1	PER PIECE
10	741392	TAILGATE PROTECTOR	TAILGATE PROTECTOR	-	1	PER PIECE
11	741365	PIVOT PROTECTOR SET	PIVOT PROTECTOR (PLG-44-803)	-	1	AS A SET
13			PIVOT PROTECTOR (PLG-44-807)	-	1	
12	741373	CABLE GUIDE AND BOLT SET	CABLE GUIDE (PLG-44-806)	-	1	AS A SET
15			CABLE GUIDE (PLG-44-809)	-	1	
37			BOLT M5x12mm	1-2	2	
16	741366	CHARGING SOCKET COVER	CHARGING SOCKET COVER	-	1	PER PIECE
17	741393	PIVOT BOLT	PIVOT BOLT (PLG-44-901)	20	6	PER 2 PIECES
19	741367	MAIN PIVOT AXLE SET	MAIN PIVOT EXPANDER	-	1	AS A SET
20			AXLE (PLG-44-911)	18-20	1	
22			SLEEVE (PLG-44-915)	-	1	
33			WASHER (PLG-44-936)	-	1	

COLLOSUS TLE  
FRAME KITS

PART	ARTICLE	ITEM	ITEM DETAILS	TORQUE (N.m)	QTY / FRAME	SOLD
19			MAIN PIVOT EXPANDER	-	1	
23	741368	LOWER LINK AXLE SET	AXLE (PLG-44-916)	18-20	1	AS A SET
24			SLEEVE (PLG-44-918)	-	1	
21	735301	BEARING SPACER	ID12, OD16, L3	-	6	PER 4 PIECES
25			SHOCK BOLT (PLG-44-919)	10	1	
26	741399	SHOCK BOLT SET	BOLT (PLG-44-921)	10	1	AS A SET
28			WASHER (PLG-44-924)	-	2	
29			SEAT CLAMP	-	1	
30	741369	SEAT CLAMP SET	BARREL NUT (PLG-44-931)	-	1	AS A SET
31			WASHER (PLG-44-932)	-	1	
36			BOLT (91292A127)	6	1	
18			BRAKE MOUNT (PLG-44-908)	-	1	
27	741394	BRAKE MOUNT AND BOLT SET	WASHER (PLG-44-922)	-	2	AS A SET
35			BOLT (91292A070)	6-8	2	



COLLOSUS TLE  
FRAME KITS

PART	ARTICLE	ITEM	ITEM DETAILS	TORQUE (N.m)	QTY / FRAME	SOLD
34	741382	ENDURO BEARING	3901 LLU MAX ENDURO BEARING	-	10	PER 2 PIECES
9			MOTOR AND BATTERY COVER	-	1	
38			M5 NUT	-	1	
40	741395	DRIVE UNIT COVER AND BOLT SET	WASHER M5	-	1	AS A SET
42			M4x0.7x10 SOCKET HEAD BOLT	1-2	2	
45			M5x0.8x16 SOCKET HEAD BOLT	1-2	1	
14			CHAIN STAY PROTECTOR	-	1	
39	741396	CS PROTECTOR AND BOLT SET	WASHER M4	-	1	AS A SET
43			M4x0.7x10 BUTTON HEAD BOLT	1-2	1	
41	741397	BATTERY BOLT SET	WASHER M5	-	2	AS A SET
44			M5x0.8x12 BUTTON HEAD BOLT	4.5	2	
n/a	741398	CHAIN GUIDE	CHAIN GUIDE	-	1	PER PIECE

# COLLOSUS TLE

## SHOCK PRESSURE RECOMMENDATION

### SHOCK PRESSURE RECOMMENDATION

#### COLLOSUS TLE 0 - FOX FLOAT X

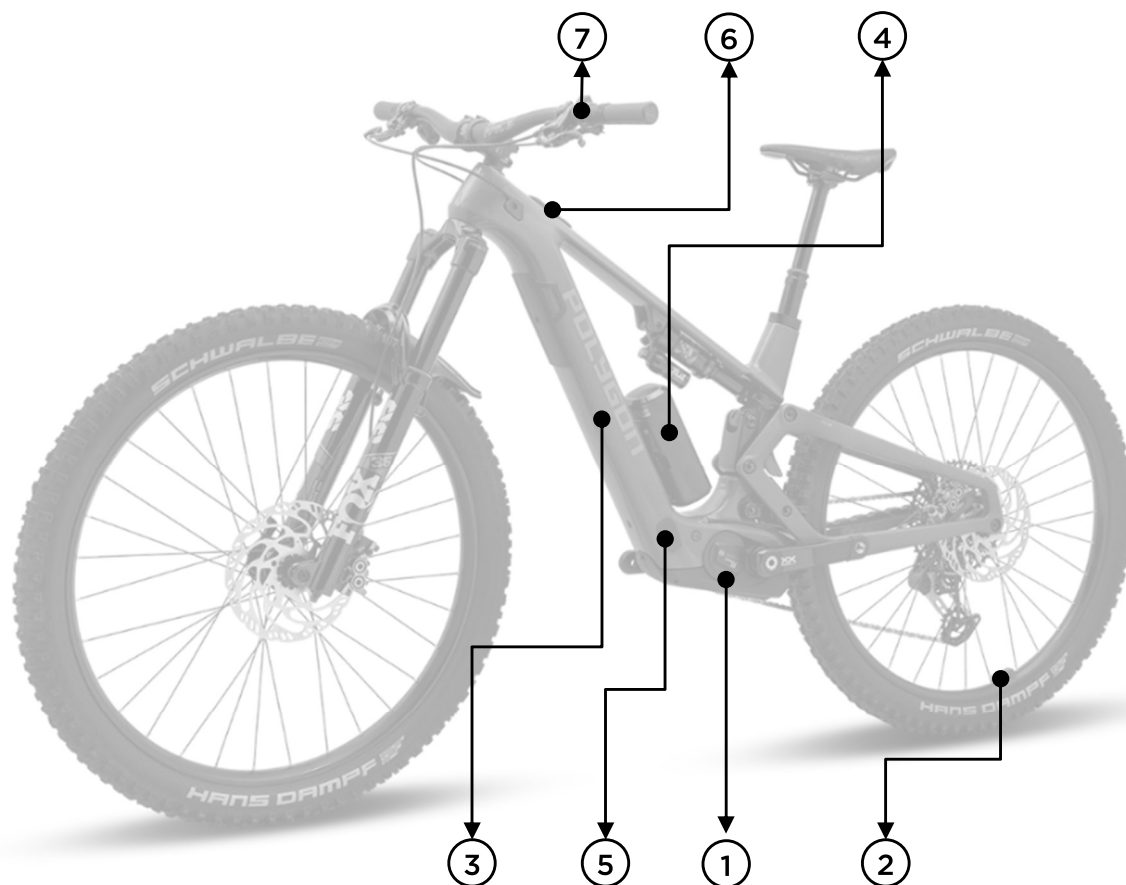
RIDER WEIGHT (KG)	SHOCK PRESSURE (PSI)	RIDER WEIGHT (KG)	SHOCK PRESSURE (PSI)
40	102	85	199
45	112	90	210
50	123	95	221
55	134	100	232
60	145	105	243
65	156	110	253
70	167	115	264
75	178	120	275
80	188		

#### COLLOSUS TLE 8 - MARZOCCHI BOMBER AIR

RIDER WEIGHT (KG)	SHOCK PRESSURE (PSI)	RIDER WEIGHT (KG)	SHOCK PRESSURE (PSI)
40	96	85	197
45	107	90	209
50	118	95	220
55	129	100	231
60	141	105	242
65	152	110	254
70	163	115	265
75	175	120	276
80	186		

RECOMMENDED SAG 30%

**COLLOSUS TLE**  
ELECTRICAL PARTS



**ELECTRICAL PART MANUAL GUIDE**

Check the link or scan the QR code to see how to operate the electrical part of Collosus TLE



**BOSCH  
PERFORMANCE LINE  
MANUAL GUIDE**



**BOSCH  
POWERMORE 250  
MANUAL GUIDE**



**BOSCH  
POWERTUBE 400  
MANUAL GUIDE**



**BOSCH  
SYSTEM CONTROLLER  
AND MINI REMOTE  
MANUAL GUIDE**



**BOSCH  
BATTERY CHARGER  
MANUAL GUIDE**



**POLYGON  
PEDELEC  
OWNER MANUAL**

COLLOSUS TLE  
ELECTRICAL PARTS

NO	ITEM	QTY	COLLOSUS TLE (EU)	COLLOSUS TLE (ID)	COLLOSUS TLE (C1)
1	DRIVE UNIT COMPONENT	1	BOSCH PERFORMANCE LINE SX EB11.100.00Y		
		1	DRIVE UNIT LOCKRING EB11.200.0JH		
		1	LOGO BEZEL EB11.200.09C		
		1	O-RING 1270.016.119		
		2	NUT M8x1 EB11.200.03C		
		1	SCREW M8x1x68,7 SHORT EB11.200.0N9		
		1	SCREW M8x1x82.3 LONG EB11.200.0NA		
		2	INSERT SLEEVE EB11.200.0GK		
2	RIM MAGNET SPEED SENSOR	1	RIM MAGNET EB11.200.015		
		1	SLEEVE EB11.200.02S		
3	BATTERY COMPONENT	1	POWER TUBE BATTERY 400WH EB12.100.048		POWER TUBE BATTERY 400WH EB12.100.043
		1	BATTERY MOUNT ADAPTER EB12.100.015		
4	POWERMORE COMPONENT	2	SCREW M5x12mm EB12.110.01B		
		1	POWERMORE 250 EB12.100.02S		POWERMORE 250 EB12.100.02T
		1	POWERMORE HOLDER EB12.110.01A		
n/a	POWERMORE CABLE	1	POWERMORE CABLE REVERSED EB12.120.07D		

## COLLOSUS TLE

### ELECTRICAL PARTS

NO	ITEM	QTY	COLLOSUS TLE (EU)	COLLOSUS TLE (ID)	COLLOSUS TLE (C1)
5	CHARGING SOCKET COMPONENT	1	SOCKET COVER EB12.120.01B		
		1	SOCKET HOLDER EB12.120.01A		
		1	O-RING 24x2 EB12.120.019		
		2	SCREW M3x14 F04N.002.663		
		1	CHARGING SOCKET CABLE EB12.120.049		
6	SYSTEM CONTROLLER	1	SYSTEM CONTROLLER EB13.100.000		
7	MINI REMOTE	1	MINI REMOTE EB13.100.01E		
n/a	BATTERY CABLE	1	BATTERY CABLE EB12.120.02N 250MM		
n/a	HMI CABLE	1	HMI CABLE 1300MM EB12.120.006 BCH3611		
n/a	BATTERY CHARGER	1	BATTERY CHARGER EB12.110.001 4A 230V		BATTERY CHARGER EB12.110.000 4A 110V
n/a	POWER CABLE	1	POWER CABLE 1270.020.330 (EU)	POWER CABLE 1270.020.330 (ID)	POWER CABLE 1270.020.343 (US)
		1	POWER CABLE 1270.020.344 (AUS)		

## COLLOSUS TLE ELECTRICAL PART WIRING

### ELECTRICAL PART WIRING

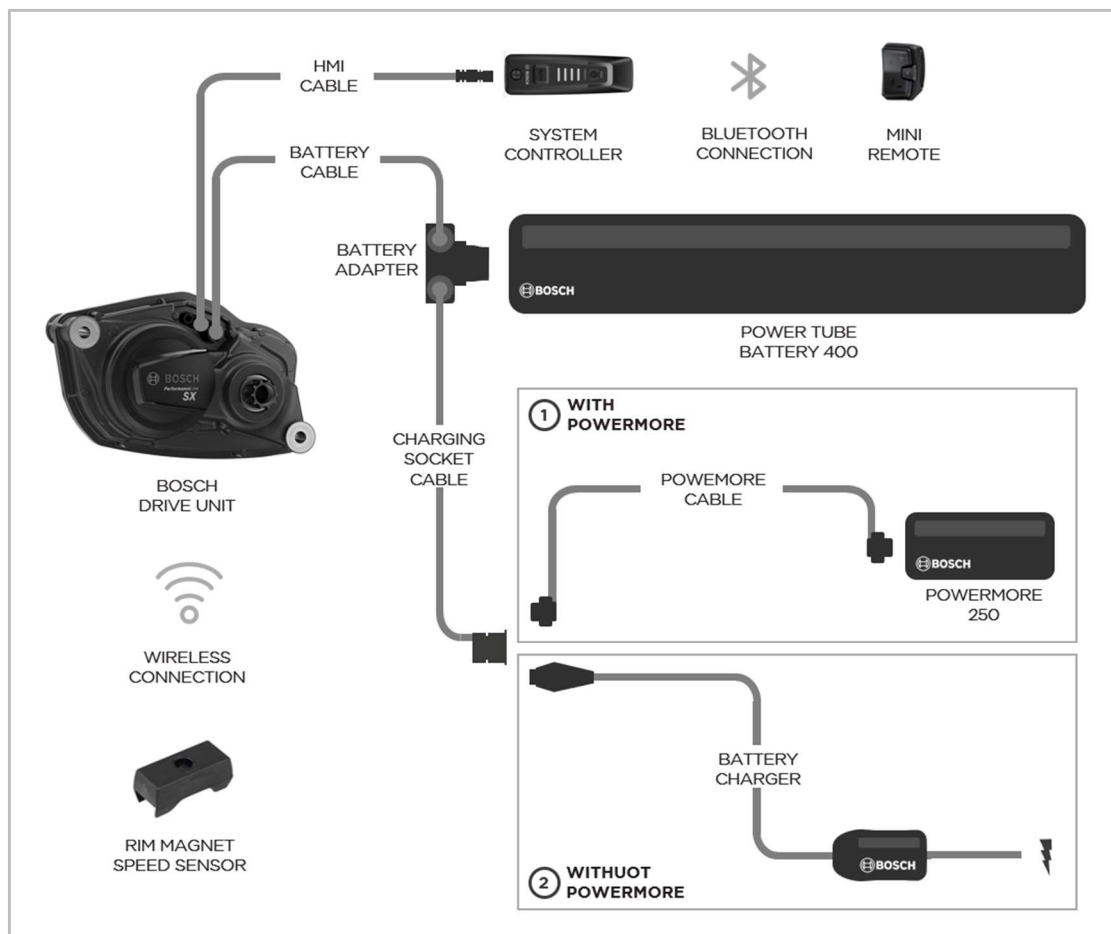
Collosus TLE is equipped with PowerMore, a compact and lightweight Bosch range extender that fits in a bottle holder and extends the riding range for longer adventures.

To use PowerMore, simply connect the PowerMore cable to the charging socket.

### WARNING

The installation of electrical components must only be performed by an authorized Polygon Bikes dealer.

Damage to components resulting from incorrect installation may void the warranty on those components.





## COLLOSUS TLE

### REGULAR INSPECTION

#### REGURAL INSPECTIONS BEFORE RIDING THE BICYCLE

Before riding the bicycle, check the following items. If any problems are found, consult your place of purchase or a distributor.

☐

Does the drive train perform gear shifting smoothly?

☐

Are the components securely installed to the frame/ handlebar/ stem, etc.?

☐

Is there sufficient charge remaining in the battery?

☐

Is there any looseness or damage in the component parts?

☐

Do any abnormal noises occur while riding?

#### AVOID

Avoid wearing clothing that may get caught in a chain or wheel, as this may cause an accident.

## COLLOSUS TLE

### HOW TO CLEAN THE BIKE



1

Use a bike wash or wet cloth to clean up every part of your bike. Preferably using a specific cleaner for the bike



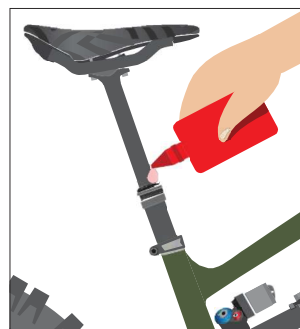
2

Wipe the bike immediately until it's dry. Do not leave it in wet conditions for a long time.



3

Clean up the drivetrain with a clean and dry cloth.



4

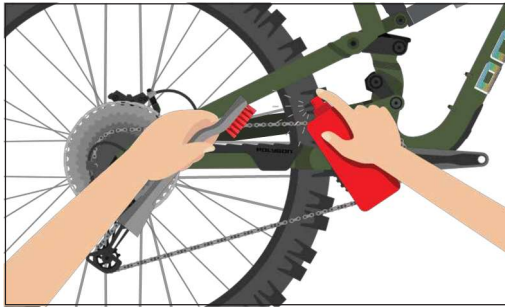
Check and lubricate every component if needed, especially 2 or more components that rub against each other, such as the seat post, bottom bracket, hub, pivot frame suspension, ect

#### NOTE

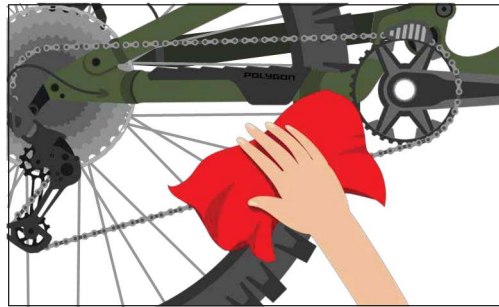
- Use the right bike wash to make sure your every bike component and frame is safe.
- Avoid washing the bike using high - pressure water
- It is highly recommended to use specific lubricants for bicycle parts, not with engine vehicles or other oil since it might lead to component performance reduction
- It is recommended to use a bike cleaner rather than detergent, solvent like acetone, and thinner to clean the bike parts.

**COLLOSUS TLE**

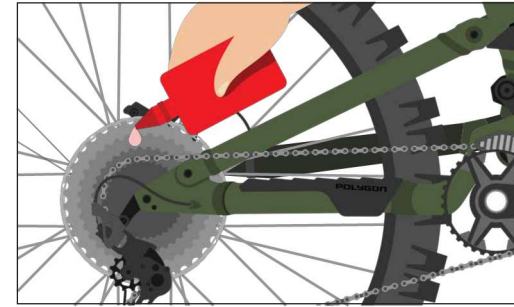
## HOW TO CLEAN THE BIKE'S CHAIN

**1**

Use a bike chain cleaner and gently brush it.

**2**

Wipe with a clean and dry cloth, and let it dry for minutes.

**3**

Lube the chain regularly

# POLYGON

OWNER MANUAL