

POLYGON

OWNER MANUAL





tambora 110



 TAMBORA AE GX



 TAMBORA AE GRX



tambora 110

CONGRATULATIONS!

Congratulations for buying Polygon Bikes! A bicycle is a great tool for transportation and recreation. Hopefully, you can find enjoyment and have a great deal of use in every ride. This manual contains important information which includes safety, performance, and maintenance.

IMPORTANT

Read this manual before taking your first ride and use it for future reference as well.

Additional safety, performance, and service information related to specific components such as suspension, pedals, and other accessories, such as helmets or lights you have purchased. Make sure your nearest authorized dealer has given all the manufacturing literature which includes in your bicycle and accessories. In case of conflict between the instructions and information provided in this manual, always follow the component manufacturer's instructions.

If you have any questions or do not understand something within this guide, take responsibility for your safety and consult with your nearest authorized dealer or the bicycle's manufacturer.

NOTE

This manual is not intended for comprehensive use, service repair, or service manual. Please see your nearest authorized dealer for all service, repairs, and maintenance-related action. Your dealer is also able to refer you to classes, clinics, or books for service or maintenance.

WARNING

To ensure the warranty of your bicycle, be sure to only use the original spare parts.



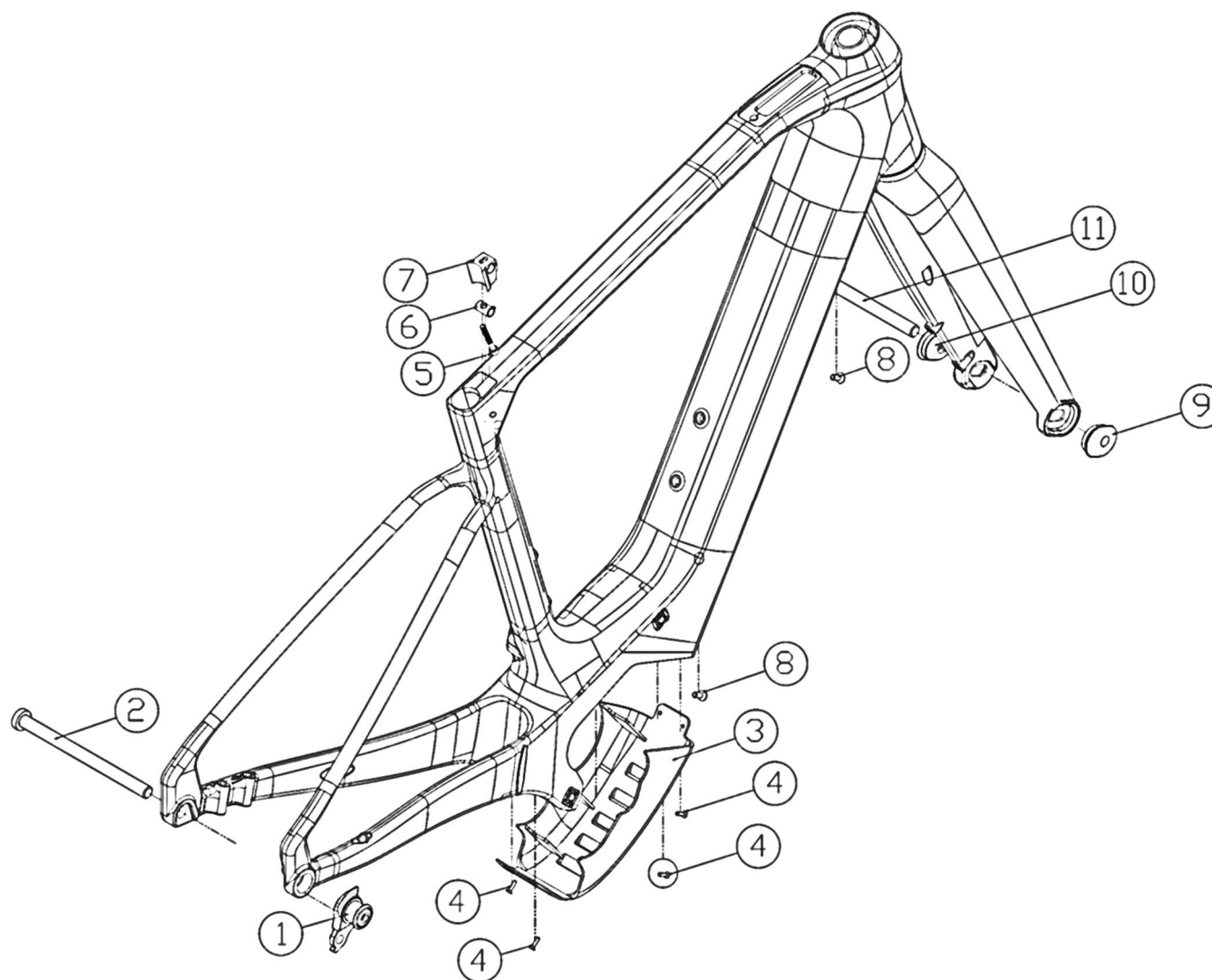
01	INTRODUCTION	07	ELECTRICAL PARTS
02	TABLE OF CONTENT	10	WIRING DIAGRAM
03	EXPLODED VIEW	11	REGULAR INSPECTION
04	FRAME KITS	12	HOW TO CLEAN THE BIKE
05	HOW TO SET FLIP CHIP	13	HOW TO MAINTAIN THE BIKE
06	CABLE ROUTING		CHAIN



TAMBORA AE

EXPLODED VIEW

tambora ae





TAMBORA AE FRAMEKITS

tambora ae

PART	ARTICLE	ITEM	ITEM DETAILS	TORQUE (N.m)	QTY / FRAME	SOLD
1	738268	UDH	UNIVERSAL DERAILLEUR HANGER	25	1	PIECES
2	738273	REAR THRU AXLE	M12x1.0, L164, T16mm, HEX6	15	1	PIECES
3	140249	DRIVE UNIT COVER SET W/ BOLT	DU COVER TAMBORA AE	-	1	AS A SET
4			DU COVER BOLT M3x12 mm	6	4	
8	140250	BATTERY BOLT	BATTERY BOLT M5x10 mm	8	2	AS A SET
5	738272	SEAT POST WEDGE	BOLT M3xL35	8	1	AS A SET
6			PLANTED NUT	-	1	
7			WEDGE	-	1	
9	738263	FORK FLIP CHIP	LEFT & RIGHT FLIP CHIP TAMBORA AE	-	1	AS A SET
10				-	1	
11	736718	FRONT THRU AXLE	M12x1.5, L120, T20mm, HEX6	15	1	PIECES



TAMBORA AE

HOW TO SET FLIP CHIP

tambora ae

STEP BY STEP FROM GRAVEL TO ALL ROAD SETTING

Check the video in this link or scan the QR code to see how to set Tambora Flip Chip



L8

L6

L4/T25



REAR
BRAKE
CALIPER



ALL ROAD
FLIP CHIP



BOLT



ENGLISH

<https://www.youtube.com/watch?v=kMI4X4vpb0Q>



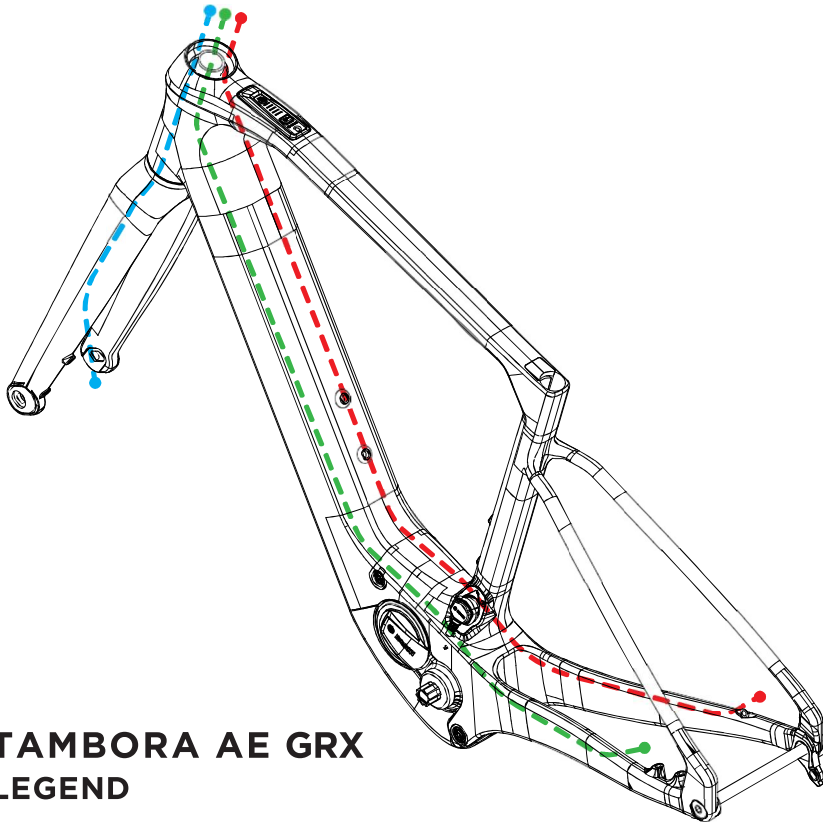
BAHASA INDONESIA

<https://www.youtube.com/watch?v=t7RtG8Wdf90>



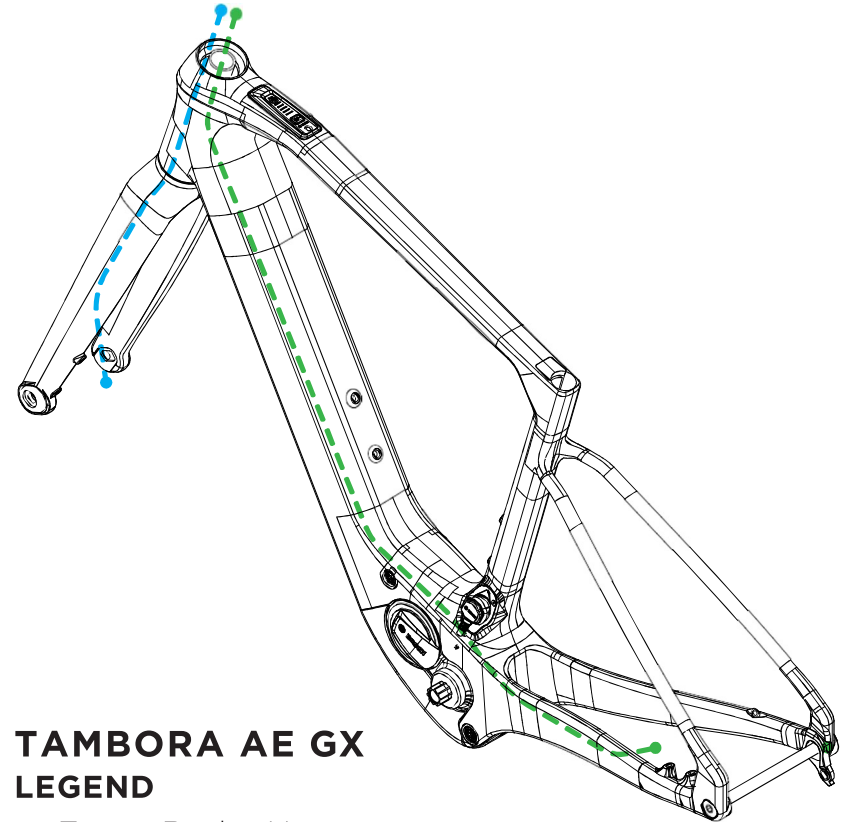
TAMBORA AE CABLE ROUTING

tambora ae



TAMBORA AE GRX LEGEND

- Front Brake Hose Rear
- Brake Hose
- RD Cable



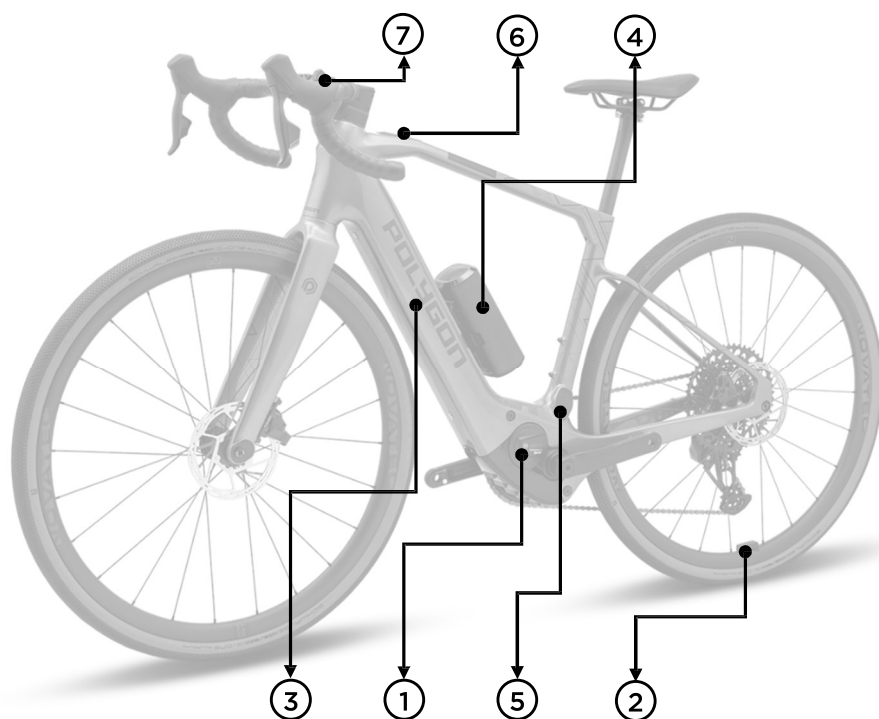
TAMBORA AE GX LEGEND

- Front Brake Hose
- Rear Brake Hose



TAMBORA AE ELECTRICAL PARTS

tambora AE



**BOSCH PERFORMANCE LINE
MANUAL GUIDE**

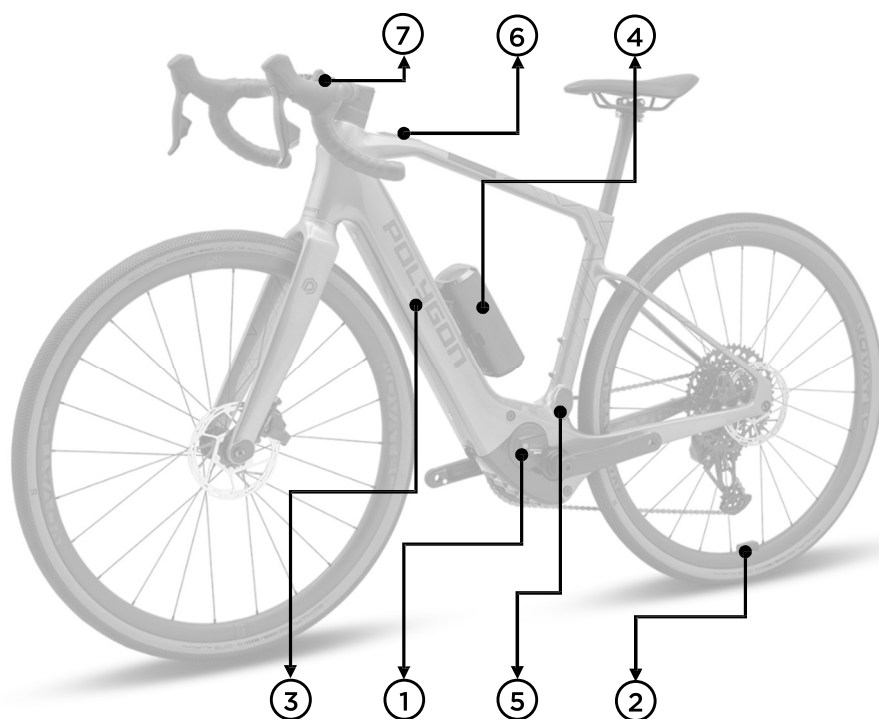
DRIVE UNIT COMPONENT

NO	ITEM	QTY	TAMBORA AE (EU)	TAMBORA AE (ID, C3)
1	DRIVE UNIT COMPONENT	1	BOSCH PERFORMANCE LINE SX EB11.100.00V	BOSCH PERFORMANCE LINE SPRINT EB11.100.011
		1	DRIVE UNIT LOCKRING	EB11.200.0JH
		1	LOGO BEZEL EB11.200.09C	LOGO BEZEL EB11.200.0C5
		1	O-RING	1270.016.119
		2	NUT M8x1	EB11.200.03C
		2	SCREW M8x1x68,7	EB11.200.0N9
		2	INSERT SLEEVE	EB11.200.0GK
2	RIM MAGNET SPEEDSENSOR	1	RIM MAGNET	EB11.200.015
		1	SLEEVE	EB11.200.02S



TAMBORA AE ELECTRICAL PARTS

tambora AE



**BOSCH POWERTUBE
400 MANUAL GUIDE**



**BOSCH POWERMORE
250 MANUAL GUIDE**

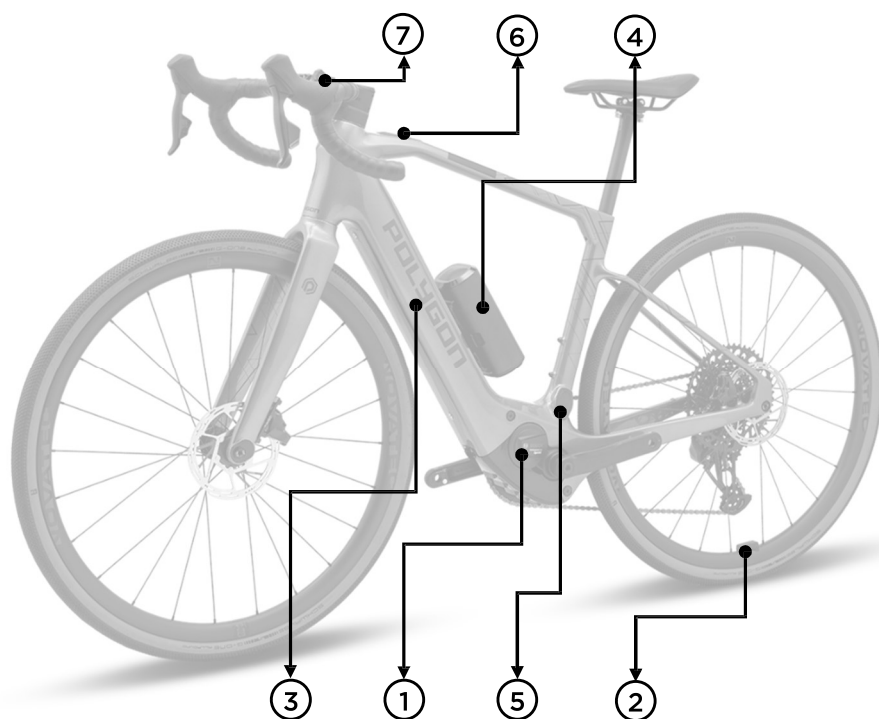
BATTERY AND COBS COMPONENT

NO	ITEM	QTY	TAMBORA AE (EU)	TAMBORA AE (ID, C3)
3	BATTERY COMPONENT	1	POWER TUBE BATTERY EB12.100.048 400WH	POWER TUBE BATTERY EB12.100.043 400WH
		1	BATTERY MOUNT ADAPTER EB12.100.015	
n/a	BATTERY CABLE	1	BATTERY CABLE EB12.120.02N 250MM	
		2	SCREW M5x12mm EB12.110.01B	
4	POWERMORE COMPONENT	1	POWERMORE 250 EB12.100.02S	POWERMORE 250 EB12.100.02T
		1	POWERMORE HOLDER EB12.110.01A	
n/a	POWERMORE CABLE	1	POWERMORE 150 CABLE EB12.120.036	
		1	SOCKET COVER EB12.120.01B	
5	CHARGING SOCKET COMPONENT	1	SOCKET HOLDER EB12.120.01A	
		1	O-RING 24x2 EB12.120.019	
		2	SCREW M3x14 F04N.002.663	
		1	CHARGING SOCKET CABLE EB12.120.049	



TAMBORA AE ELECTRICAL PARTS

tambora AE



POLYGON PEDELEC
OWNER MANUAL

SYSTEM CONTROLLER

NO	ITEM	QTY	TAMBORA AE (EU)	TAMBORA AE (ID, C3)
6	SYSTEM CONTROLLER	1	SYSTEM CONTROLLER	EB13.100.000
n/a	HMI CABLE	1	HMI CABLE 1300MM	EB12.120.006 BCH3611

MINI REMOTE

NO	ITEM	QTY	TAMBORA AE (EU)	TAMBORA AE (ID, C3)
7	MINI REMOTE	1	DROPBAR MINI REMOTE	EB13.100.002

CHARGER COMPONENTS

NO	ITEM	QTY	TAMBORA AE (EU)	TAMBORA AE (ID, C3)
n/a	BATTERY CHARGER	1	BATTERY CHARGER EB12.110.001 4A 230V	BATTERY CHARGER EB12.110.000 4A 110V
n/a	POWER CABLE	1	POWER CABLE 1270.020.330 (EU)	POWER CABLE 1270.020.343 (US) POWER CABLE 1270.020.344 (AUS)



HMI CABLE

SYSTEM CONTROLLER

BLUETOOTH CONNECTION

DROP BAR MINI REMOTE

BATTERY CABLE

BATTERY ADAPTER

CHARGING SOCKET CABLE

BOSCH DRIVE UNIT

WIRELESS CONNECTION

RIM MAGNET SPEED SENSOR

POWERTUBE BATTERY 400WH

1 WITH POWERMORE

POWERMORE CABLE

POWERMORE 250

2 WITHOUT POWERMORE

BATTERY CHARGER



REGURAL INSPECTIONS BEFORE RIDING THE BICYCLE

Before riding the bicycle, check the following items. If any problems are found, consult your place of purchase or a distributor.



Does the drive train perform gear shifting smoothly?



Is there any looseness or damage in the component parts?



Are the components securely installed to the frame/ handlebar/ stem, etc.?



Do any abnormal noises occur while riding?



Is there sufficient charge remaining in the battery?

AVOID

Avoid wearing clothing that may get caught in a chain or wheel, as this may cause an accident.



TAMBORA AE

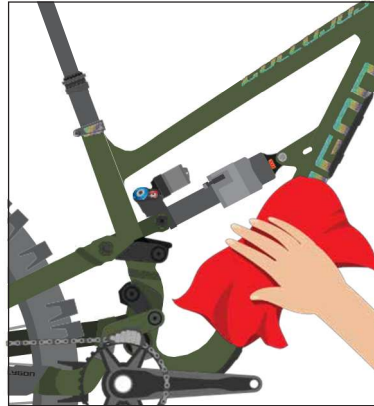
HOW TO CLEAN THE BIKE

tambora AE



1

Use a bike wash or wet cloth to clean up every part of your bike. Preferably using a specific cleaner for the bike



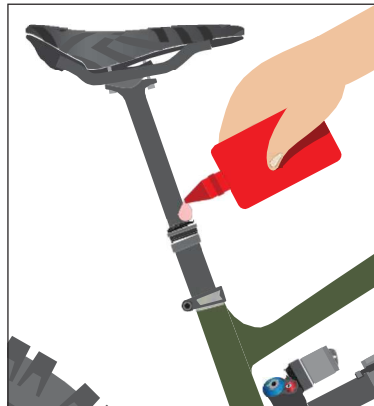
2

Wipe the bike immediately until it's dry. Do not leave it in wet conditions for a long time.



3

Clean up the drivetrain with a clean and dry cloth.



4

Check and lubricate every component if needed, especially 2 or more components that rub against each other, such as the seat post, bottom bracket, hub, pivot frame suspension, ect

NOTE

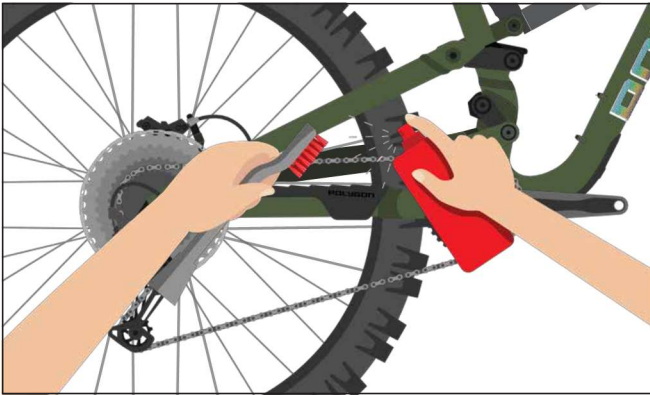
- Use the right bike wash to make sure your every bike component and frame is safe.
- Avoid washing the bike using high - pressure water
- It is highly recommended to use specific lubricants for bicycle parts, not with engine vehicles or other oil since it might lead to component performance reduction
- It is recommended to use a bike cleaner rather than detergent, solvent like acetone, and thinner to clean the bike parts.



TAMBORA AE

HOW TO CLEAN THE BIKE'S CHAIN

tambora ae



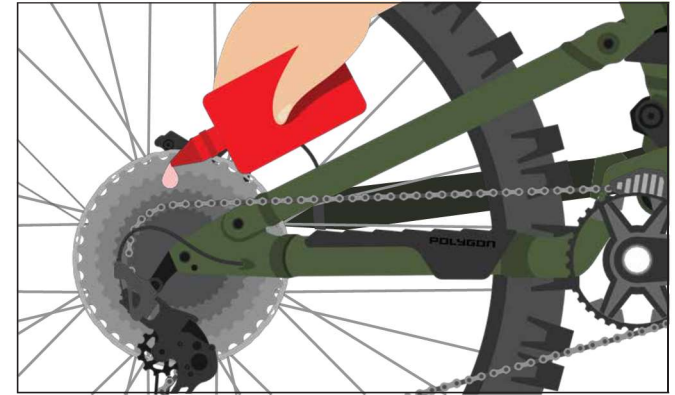
1

Use a bike chain cleaner and gently brush it.



2

Wipe with a clean and dry cloth, and let it dry for minutes.



3

Lube the chain regularly

POLYGON

OWNER MANUAL