



COLLOSUS DH MANUAL GUIDE

COLLOSUS DH

COLLOSUS
DH7



COLLOSUS
DH9



POLYGON

2025



CONGRATULATIONS!

Congratulations for buying Polygon Bikes! A bicycle is a great tool for transportation and recreation. Hopefully, you can find enjoyment and have a great deal of use in every ride. This manual contains important information which includes safety, performance, and maintenance.

IMPORTANT

Read this manual before taking your first ride and use it for future reference as well.

Additional safety, performance, and service information related to specific components such as suspension; pedals; and other accessories, such as helmets or lights you have purchased. Make sure your nearest authorized dealer has given all the manufacturing literature which includes in your bicycle and accessories. In case of conflict between the instructions and information provided in this manual, always follow the component manufacturer's instructions.

If you have any questions or do not understand something within this guide, take responsibility for your safety and consult with your nearest authorized dealer or the bicycle's manufacturer.

NOTE

This manual is not intended for comprehensive use, service repair, or service manual. Please see your nearest authorized dealer for all service, repairs, and maintenance-related action. Your dealer is also able to refer you to classes, clinics, or books for service or maintenance.

WARNING

To ensure the warranty of your bicycle, be sure to only use the original spare parts.



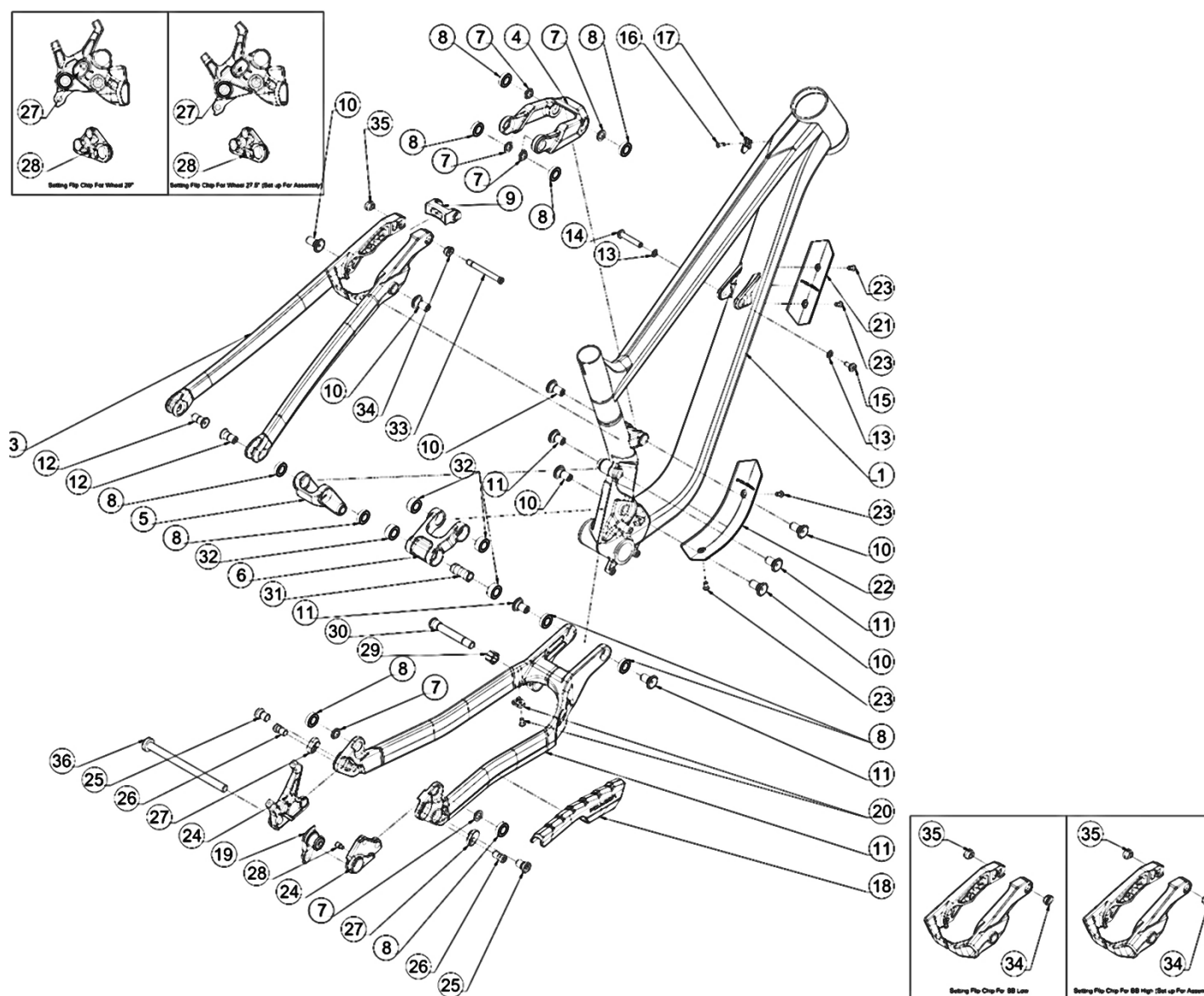
01	INTRODUCTION
02	TABLE OF CONTENT
03	EXPLODED VIEW
04	FRAME KITS
07	ASSEMBLY INSTRUCTION
10	REGULAR INSPECTION
11	HOW TO CLEAN THE BIKE
12	HOW TO MAINTAIN THE BIKE CHAIN



COLLOSUS DH

EXPLODED VIEW

COLLOSUS DH





COLLOSUS DH

FRAME KITS

COLLOSUS DH

PART	ARTICLE	ITEM	ITEM DETAILS	TORQUE (N.m)	QTY / FRAME	SOLD
4	140295	SHOCK LINK	SHOCK LINK FOR COLLOSUS DH	-	1	PER PIECE
5	140296	SECOND LINK	SECOND LINK FOR COLLOSUS DH	-	1	PER PIECE
6	140297	FIRST LINK	FIRST LINK FOR COLLOSUS DH	-	1	PER PIECE
7	735301	BEARING SPACER	ID12, OD16, L3	-	6	PER 4 PIECES
8	733707	SEALED BALL BEARING	ID12, OD24, L6	-	10	PER PIECE
9	140298	BRIDGE SEAT STAY	BRIDGE SS FOR COLLOSUS DH	-	1	PER PIECE
10	735298	PIVOT BOLT	M12x1.25, L26.5, T16.2, HEX5	20	6	PER 2 PIECES
11	736038	PIVOT BOLT	M12x1.25, L23, 14.7, HEX5	20	4	PER 2 PIECES
12	735299	PIVOT BOLT	M12x1.25, L26, T12, HEX5	20	2	PER 2 PIECES
13			WASHER ID8, OD12.5	-	2	
14	140299	REAR SHOCK BOLT AND NUT SET	PIVOT SHAFT FEMALE M6x1.0, L47.5, T36.5, HEX6	12	1	AS A SET
15			PIVOT BOLT MALE M6x1.0, L18, T9.5 HEX5	12	1	



COLLOSUS DH

FRAME KITS

COLLOSUS DH

PART	ARTICLE	ITEM	ITEM DETAILS	TORQUE (N.m)	QTY / FRAME	SOLD
16	140300	CABLE GUIDE SET	BOLT M4x0.7, L12, HEX2.5	4	1	AS A SET
17			CABLE GUIDE	-	1	
18	736043	CS PROECTOR	RUBBER CHAIN STAY POROTECTOR	-	1	PER PIECE
19	738268	REPLACABLE DROP OUT	UNIVERSAL DERAILLEUR HANGER	25	1	PER PIECE
20	736045	CABLE GUIDE WITH BOLT	CABLE GUIDE W/ BOLT M5x0.8, L16, HEX3	-	1	PER PIECE
21	736520	DOWN TUBE SHUTTLE PAD SET	KRATON RUBBER SHUTTLE PAD	-	1	AS A SET
23			BOLT M5x0.8, L12, HEX3	4	2	
22	736522	DOWN TUBE PROTECTOR SET	KRATON RUBBER DT PROTECTOR	-	1	AS A SET
23			BOLT M5x0.8, L12, HEX3	4	2	
24	140301	DROP OUT	LEFT AND RIGHT DROP OUT FOR COLLOSUS DH	-	1	PER PIECE
25	140303	REAR END BOLT	BOLT M12X1.25, L20.5, T9, HEX6	20	2	PER 2 PIECES
26	140304	REAR END FLIP CHIP BOLT	BOLT M10X1.25, L22.5, T9, HEX6	15	2	PER 2 PIECES
27	140305	REAR END FLIP CHIP	REAR END FLIP CHIP ADAPTER	-	2	PER 2 PIECES



COLLOSUS DH

FRAME KITS

COLLOSUS DH

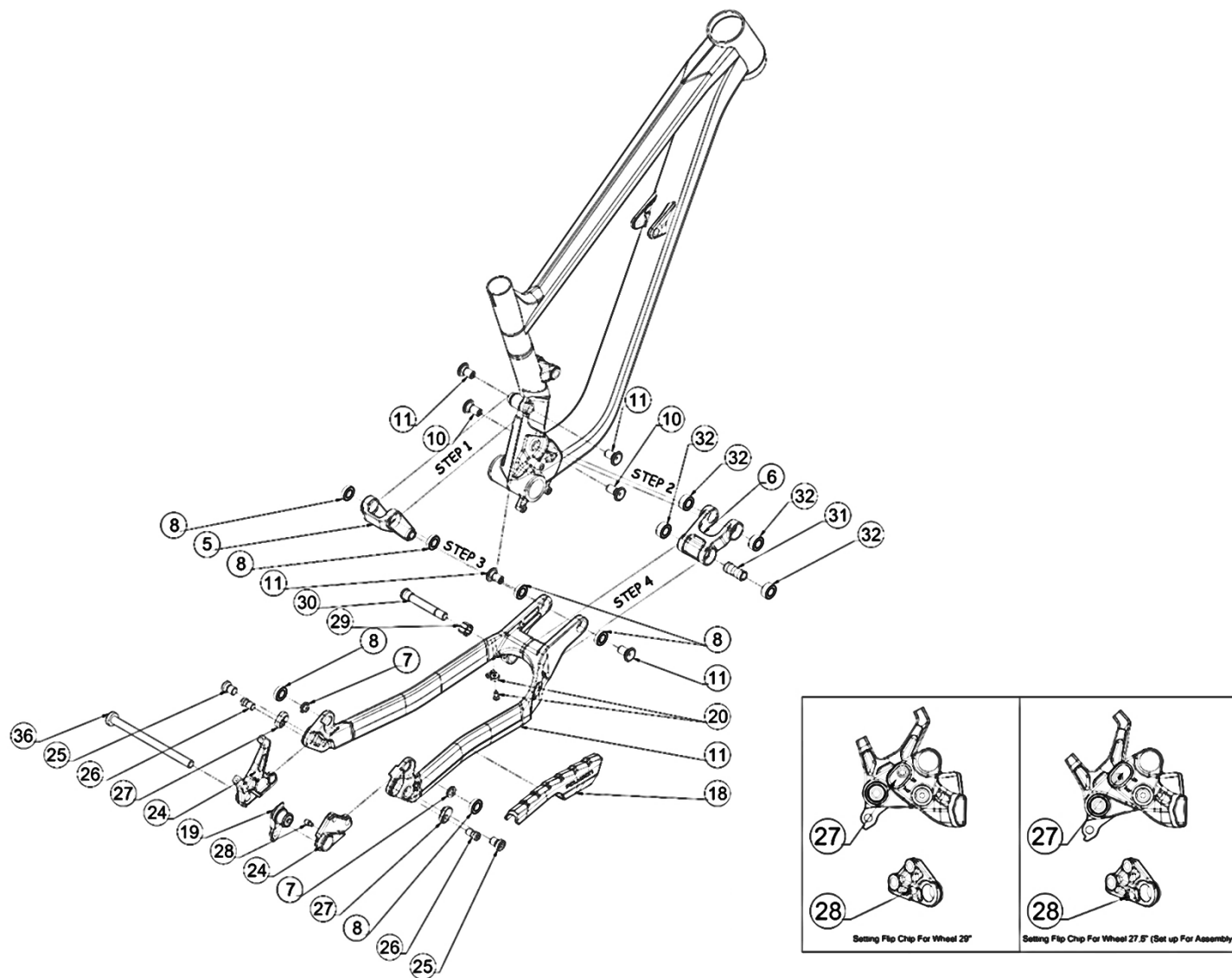
PART	ARTICLE	ITEM	ITEM DETAILS	TORQUE (N.m)	QTY / FRAME	SOLD
28	140302	BOLT UDH STOPPER	BOLT M5X0.8, L14, T6, HEX4	-	1	PER PIECE
29	140306	FIRST LINK EXPANDER SET	EXPANDANDABLE FLOATING SPACER	-	1	AS A SET
30			PIVOT SHAFT M12X1.25, L90, T15.5, HEX6	20	1	
31			PIVOT SPACER ID12, OD14.5, L37	-	1	
32	140307	ENDURO BEARING	3901 LLU MAX ENDURO BEARING	-	4	PER 2 PIECES
33	140308	SHOCK MOUNT BOLT	PIVOT SHAFT M8X1.25, L76.5, T9, HEX5	12	1	PER PIECE
34	140309	SHOCK MOUN FLIP CHIP	SHOCK MOUNT FLIP CHIP ADAPTER	-	1	AS A SET
35			SHOCK MOUNT FLIP CHIP NUT ADAPTER	-	1	
36	140310	REAR THRU AXLE	M12X1.0, L182, T16, HEX6	11	1	PER PIECE



COLLOSUS DH

CHAIN STAY ASSEMBLY

COLLOSUS DH

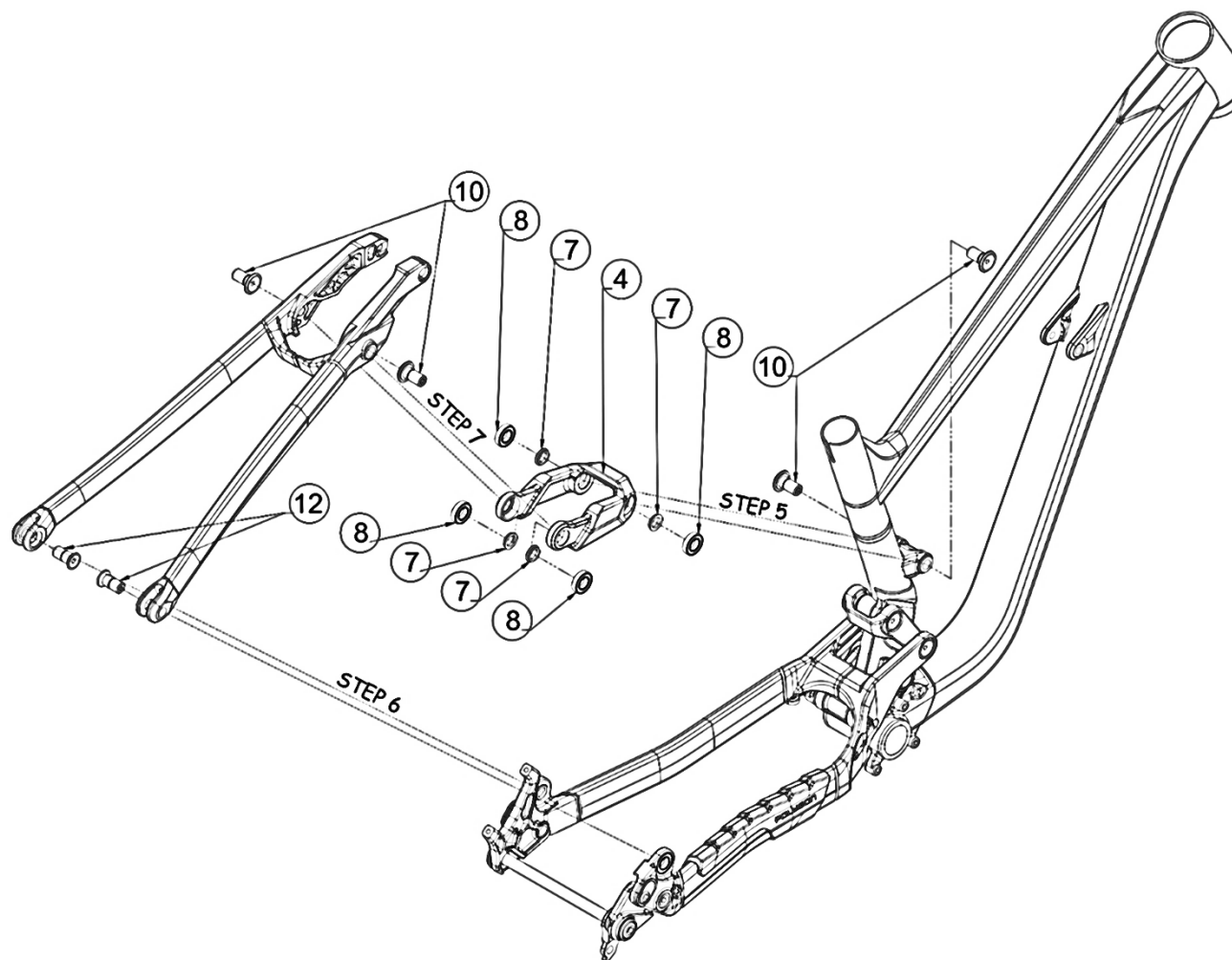




COLLOSUS DH

SEAT STAY ASSEMBLY

COLLOSUS DH

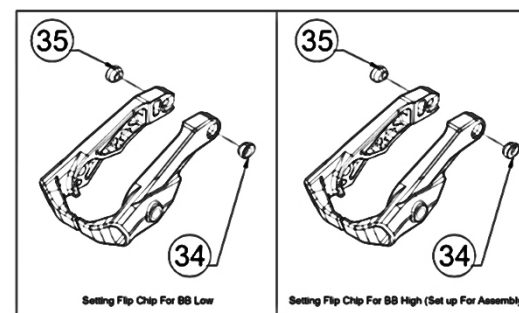
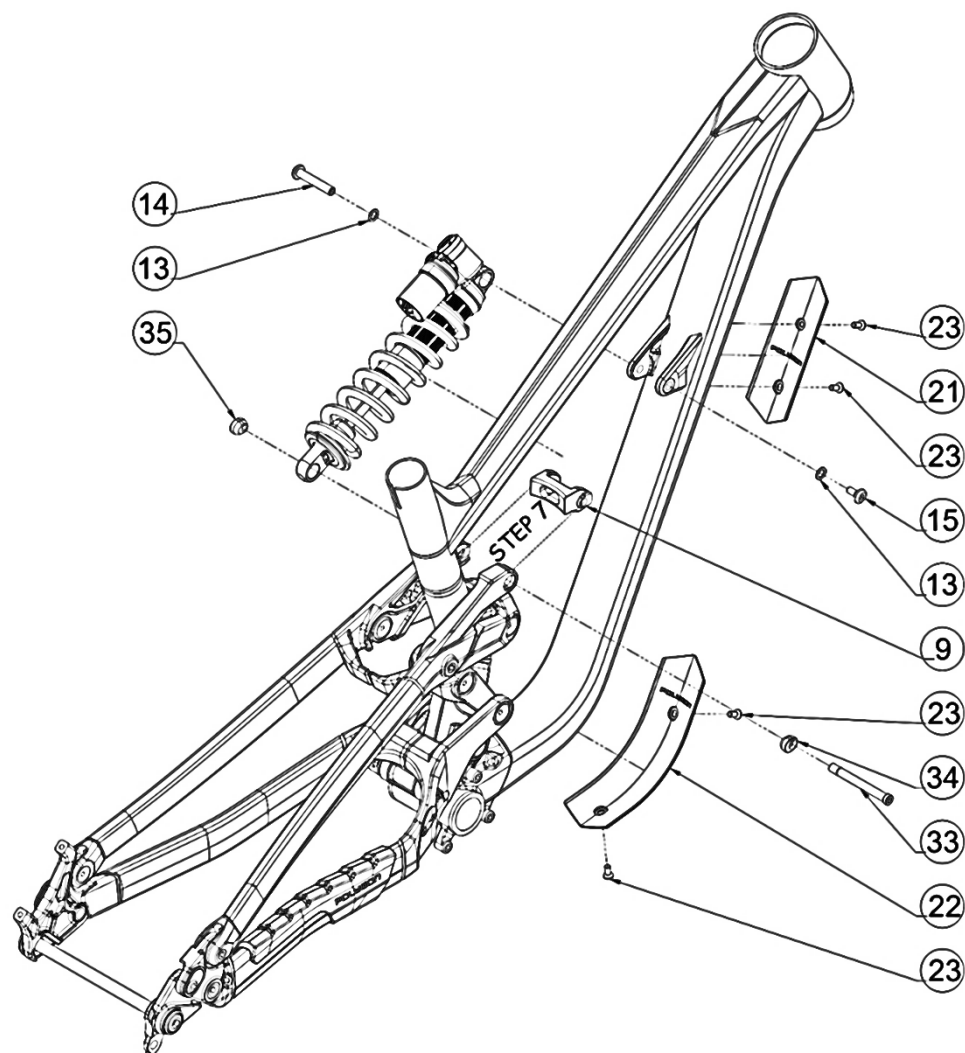




COLLOSUS DH

REAR SHOCK AND ACCESSORIES ASSEMBLY

COLLOSUS DH





REGURAL INSPECTIONS BEFORE RIDING THE BICYCLE

Before riding the bicycle, check the following items. If any problems are found, consult your place of purchase or a distributor.



Does the drive train perform gear shifting smoothly?



Is there any looseness or damage in the component parts?



Are the components securely installed to the frame/ handlebar/ stem, etc.?



Do any abnormal noises occur while riding?



Is there sufficient charge remaining in the battery?

AVOID

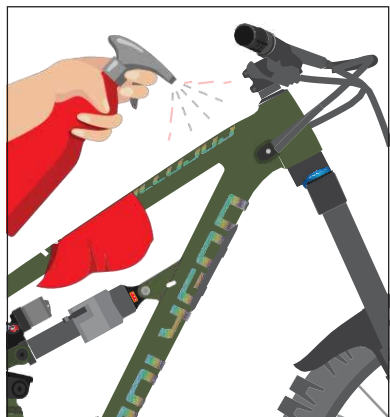
Avoid wearing clothing that may get caught in a chain or wheel, as this may cause an accident.



COLLOSUS DH

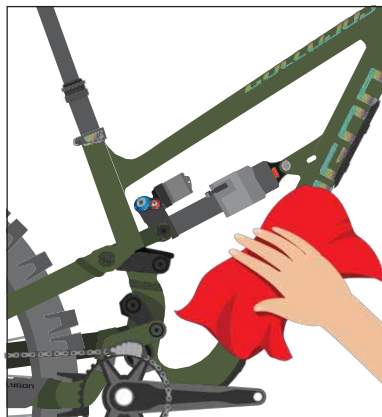
HOW TO CLEAN THE BIKE

COLLOSUS DH



1

Use a bike wash or wet cloth to clean up every part of your bike. Preferably using a specific cleaner for the bike



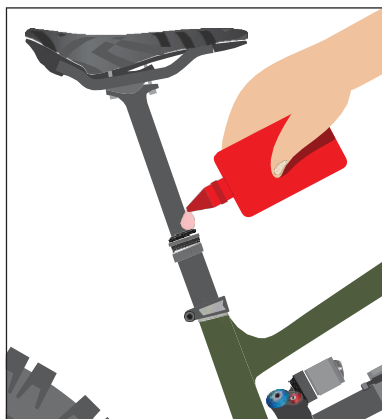
2

Wipe the bike immediately until it's dry. Do not leave it in wet conditions for a long time.



3

Clean up the drivetrain with a clean and dry cloth.



4

Check and lubricate every component if needed, especially 2 or more components that rub against each other, such as the seat post, bottom bracket, hub, pivot frame suspension, ect

NOTE

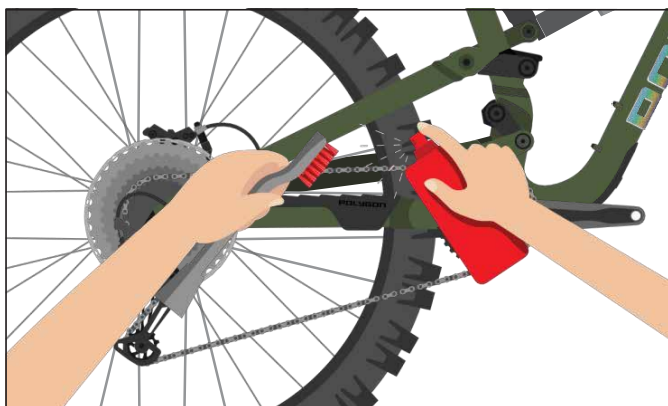
- Use the right bike wash to make sure your every bike component and frame is safe.
- Avoid washing the bike using high - pressure water
- It is highly recommended to use specific lubricants for bicycle parts, not with engine vehicles or other oil since it might lead to component performance reduction
- It is recommended to use a bike cleaner rather than detergent, solvent like acetone, and thinner to clean the bike parts.



COLLOSUS DH

HOW TO CLEAN THE BIKE'S CHAIN

COLLOSUS DH



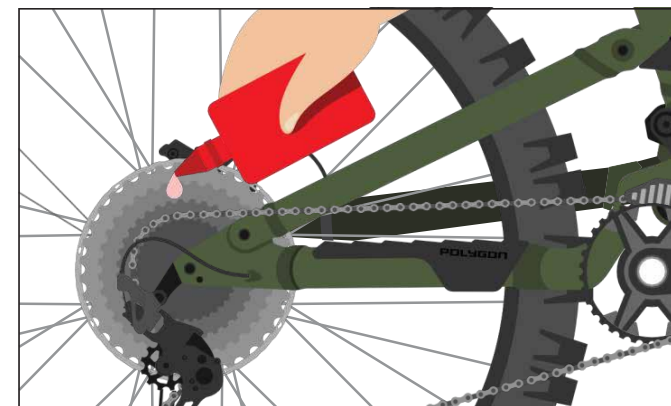
1

Use a bike chain cleaner and gently brush it.



2

Wipe with a clean and dry cloth, and let it dry for minutes.



3

Lube the chain regularly



COLLOSUS DH
MANUAL GUIDE

COLLOSUS DH

POLYGON

2025